

# MAKING A SPOTTY SWATCH PATTERN IN ILLUSTRATOR

Make a square. I'm using 11mm x 11mm.

Fill it with a colour and matching stroke.



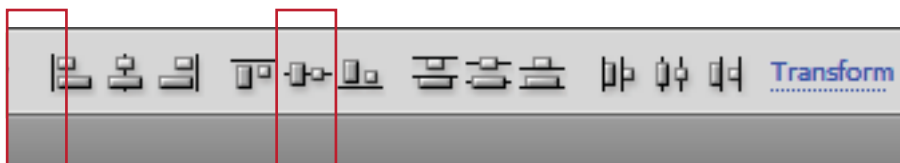
Create a circle. Mine is 4mm x 4mm. Fill it with a colour and add matching stroke.

Mine is invisible at the moment because it's white!



It's right here!

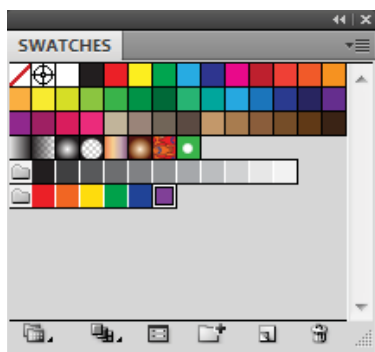
Place the circle inside the square, select them both and centre them vertically and horizontally.



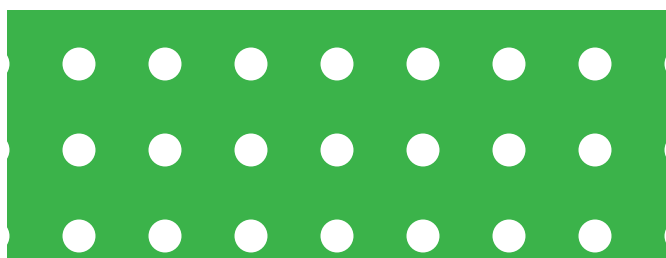
=



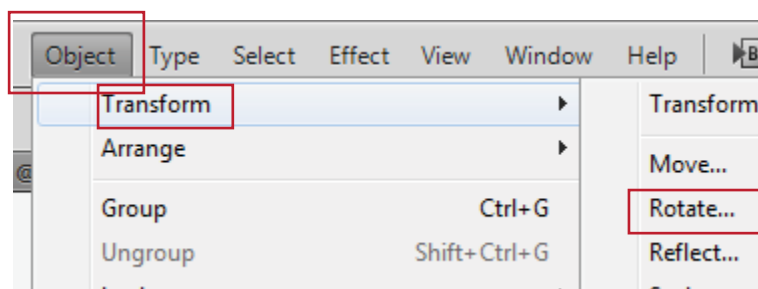
Select the square with the circle in and drag over to the Swatch palette and drop it in.



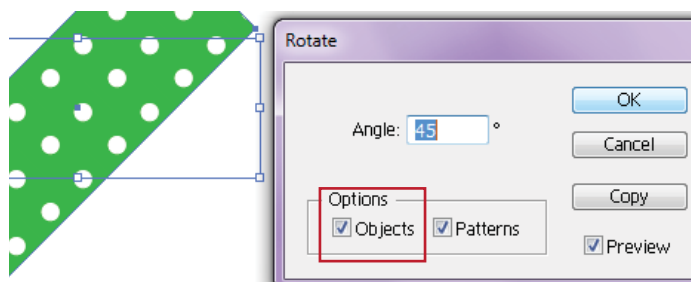
Now you can apply the spotty pattern to shapes etc. Here, I've filled a rectangle. Now, it doesn't look great so let's sort that out.



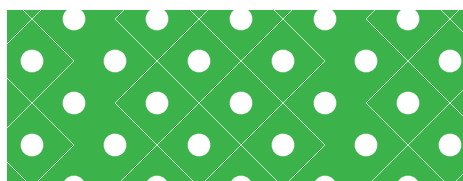
Go to Object>Transform>Rotate



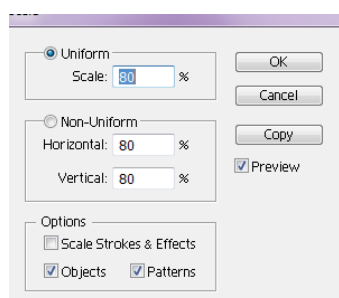
Deselect the Object check box otherwise you'll rotate the rectangle!



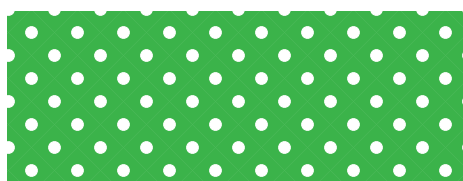
Rotating the pattern 45 degrees produces something much nicer!



And if you want the spots bigger or smaller? Go back to Object>Transform and this time select Scale



Again, make sure you don't have Object selected.  
In the top 'uniform' panel enter a value bigger or smaller to suit yourself.



There you go! Now you can make spotty swatches to your heart's content!