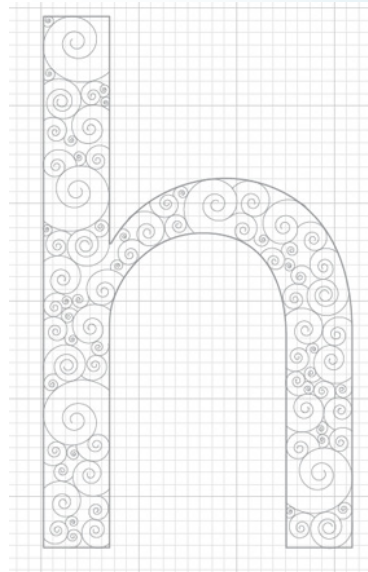


# Creating a wire-work effect using AI and PS

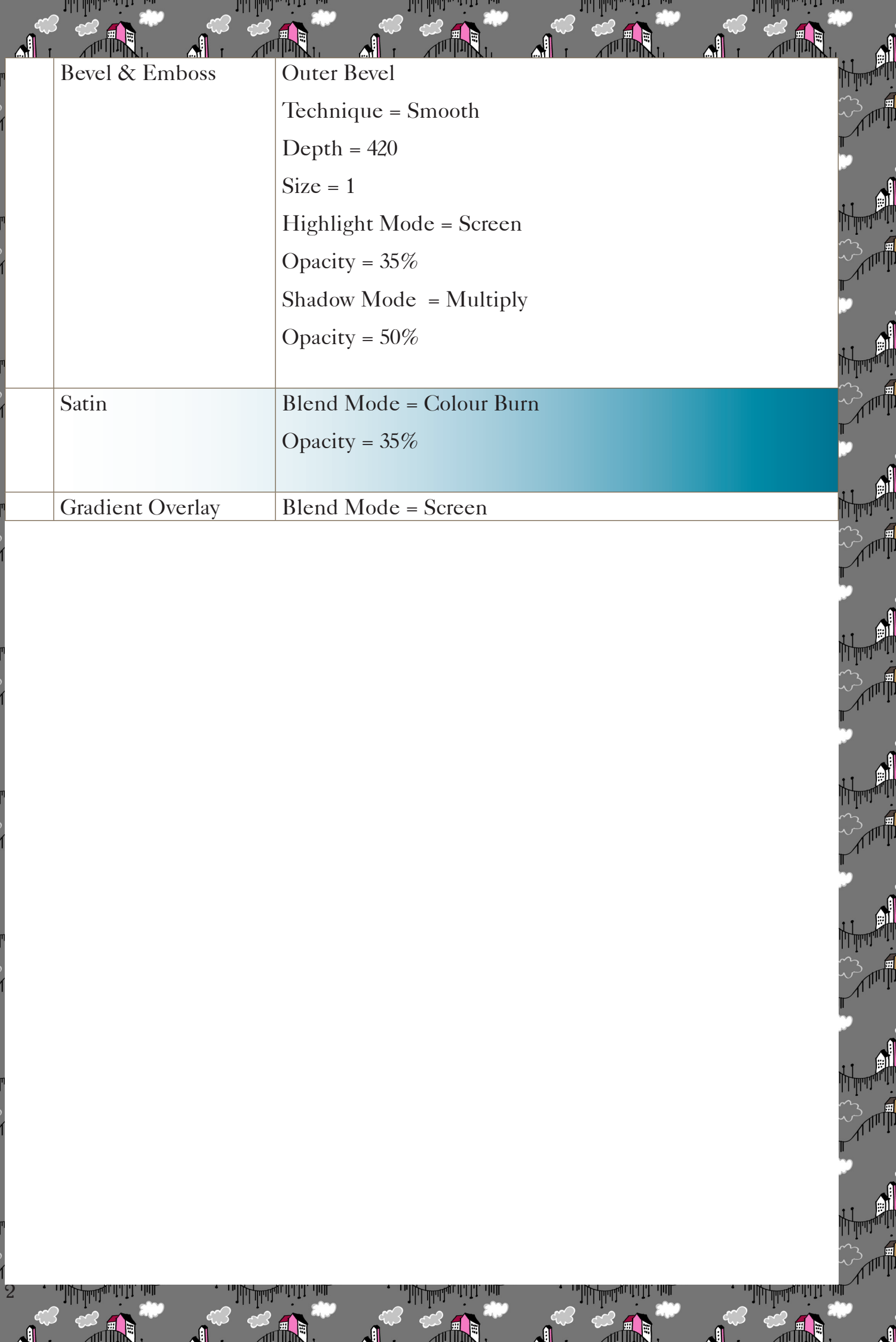
Creating a wire-work effect in PS is fairly simple and quick. I used AI to create a text shape (the letter h) filled with spirals of various sizes, decay values, number of segments and orientations. I gave mine a fill of zero and a stroke of 0.5.

I finished up with the image below:



- 1 Copy the .ai image and paste it, selecting the 'Pixels' option into a new file in Photoshop.
- 2 Apply the following effects (click fx at the bottom of the Layers panel or go to Layer Styles in the Layer menu). Any options not mentioned can be left to their default values.

Drop Shadow	Blend Mode = Multiply Opacity = 75 Distance = 18 Spread = 2 Size = 10
Outer Glow	Blend Mode = Screen Opacity = 80%



Bevel & Emboss	Outer Bevel Technique = Smooth Depth = 420 Size = 1 Highlight Mode = Screen Opacity = 35% Shadow Mode = Multiply Opacity = 50%
Satin	Blend Mode = Colour Burn Opacity = 35%
Gradient Overlay	Blend Mode = Screen