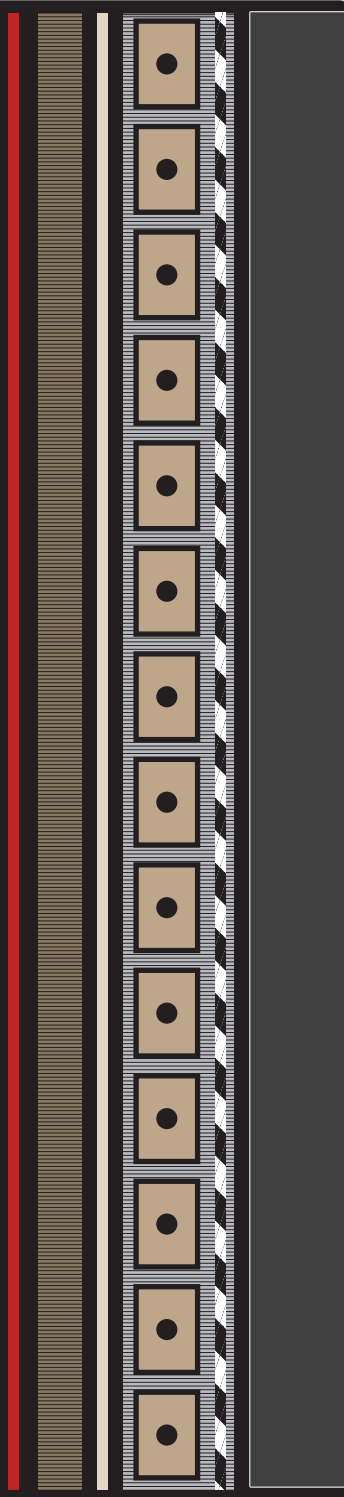
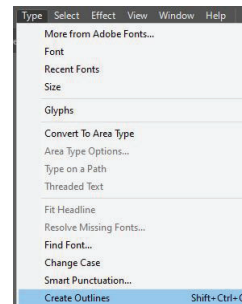
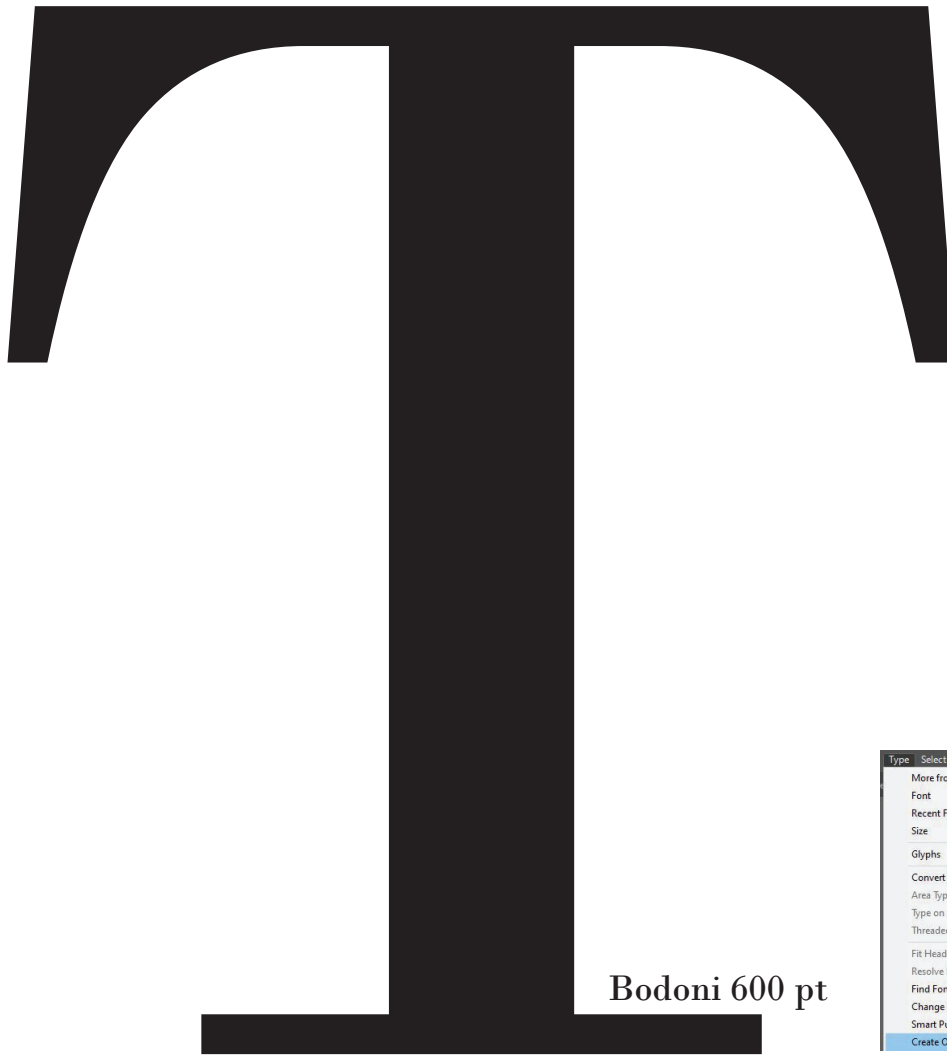


Siquam erat volutpat. Ut wisi enim ad minim veniam, quis nostrud exd tincidunt ut laoreet dolore magna aliquam erat volutpat. Ut wisi enim ad minim veniam, quis nostrud exerci tation ullamcorper suscipit lobortis nisl ut aliquip ex ea commodo consequat. uit aliquip ex ea commodo consequat. Duis autem vel eum iriure dolor in hendrerit in vulputate velit esse molestie consequat, vel illum dolore eu feugiat nulla facilisis at vero eros et accumsan et iusto odio dignissim qui blandit praesent luptatum zzril delenit augue duis dolore te feugait



Lorem ipsum dolor sit amet, consectetur adipiscing elit, sed diam nonummy nibh euismod tincidunt ut laoreet dolore magna aliquam erat volutpat. Ut wisi enim ad minim veniam, quis nostrud exerci tation ullamcorper suscipit lobortis nisl ut aliquip ex ea commodo consequat. Duis autem vel eum iriure dolor in he it esse molestie consequat, vel illum dolore eu feugiat nulla facilisis at vero eros et accumsan im qui blandit praesent luptatum zzril delenit augue duis dolore te feugait



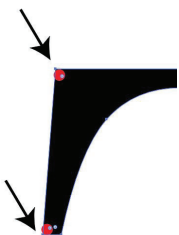
I've typed in the letter 'T': Bodoni 600 pt. It can be any font, any letter, though.

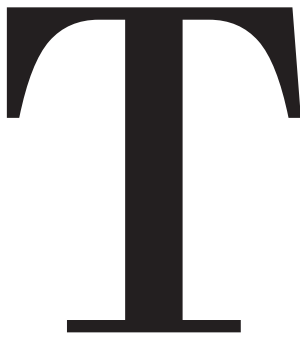
Select the letter, go to Type> Create Outlines.
The letter is now an editable shape.

I want the arms of the T to be vertically straight instead of having the slight flare.

Get the Direct Selection Tool (A) and select the T; you'll see the anchor points that bound the shape. You can add more using the + Add Anchor Points Tool, if you want.

Still using the Direct Selection Tool, click the top then Shift-click the bottom left-most anchor point of the T's arm:

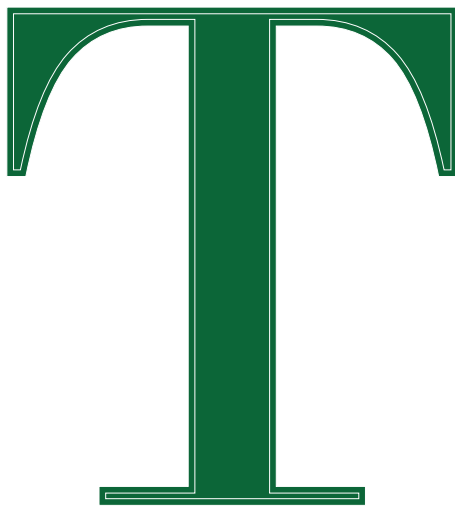




Go to Align and select the Left-Align icon. Do the same with the anchor points on the right-side of the T but select Right-Align for that side.

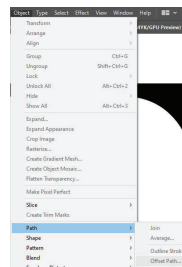


You might be using a different letter or you might want to change it in others ways, but the principles are the same. Create an outline and use the Direct Selection Tool to modify it.

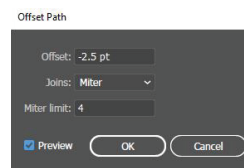


Select the letterform and set the fill to None. Or fill it with a different colour. It's entirely up to you!

I'm simply going to suggest things you can pick from: do you own thing! Once you have some basic ideas, you can suit yourself. :)



Create an outline: Select the letterform and go to Object>Path>Offset Path.



I've gone for an inner outline, -1.5pt. If you want the outline outside of the letterform, enter a

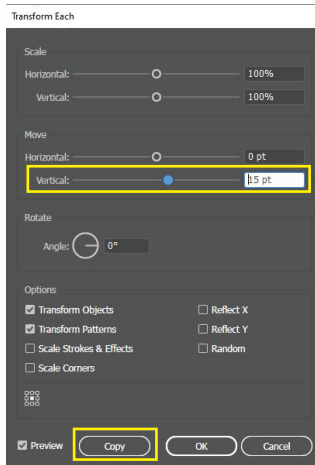
positive number instead.



Select the T and go to Object>Ungroup. Now both the letterform and the outline are editable. I've filled my inner with white (just looks like the letterform with a white fill and green stroke but being separate means the shape has more versatility.

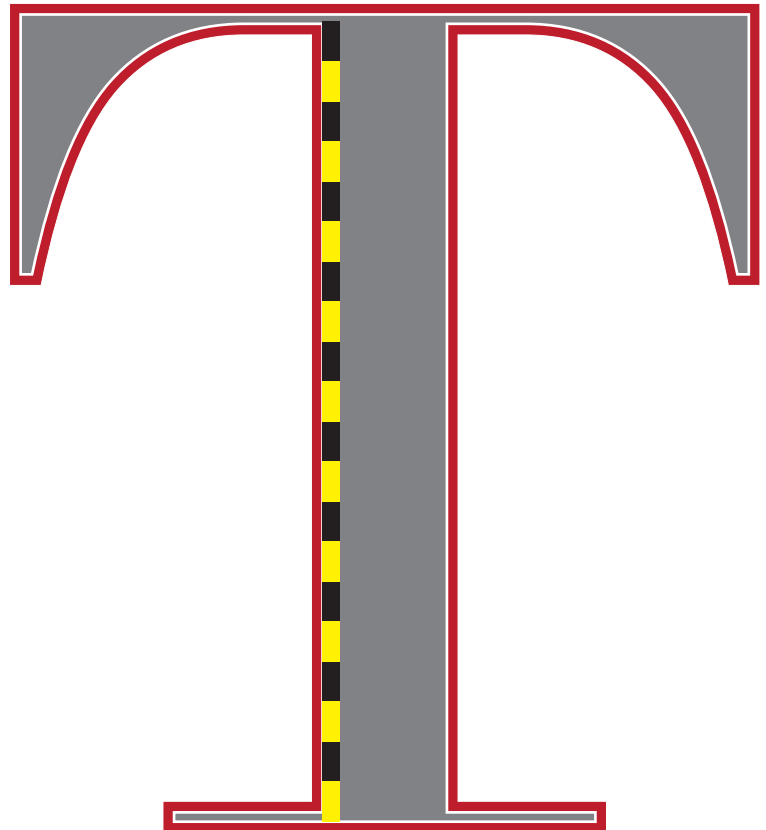
Select the T and go to Object>Ungroup. Now both the letterform and the outline are editable. I've filled my inner with black and given it a white stroke, just 0.25pt (just looks like the letterform with a white fill and white stroke but being separate means the shape has

Rectangle: 7pt x 15 pt

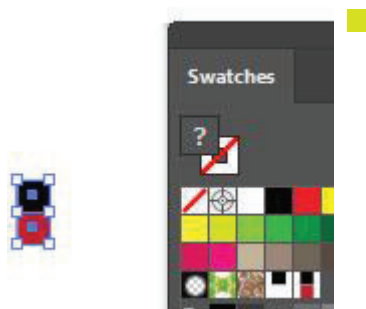


Create a rectangle: mine is 7 x 15pt. Go to Object>Transform Each. Enter the height of the rectangle (15pt) in Move then select Copy. Change the fill colour of the duplicate to white. Select both rectangles then go back to Transform Each, double the height in the Move field to 30 pt and Copy again.

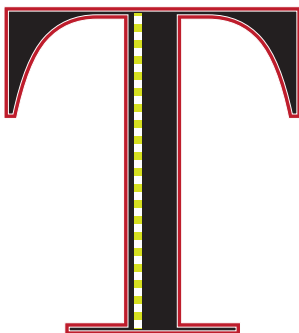
Use Ctrl+D to create any number of duplicates then Group them and place them where you want.(Object>Group :



Or, make a small square, fill it with one colour, then create a second square and align them with no gap and drag them into your Swatches palette:



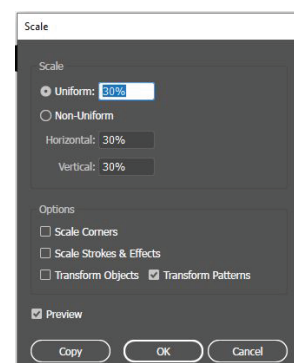
Create a shape and select your new swatch to fill it:



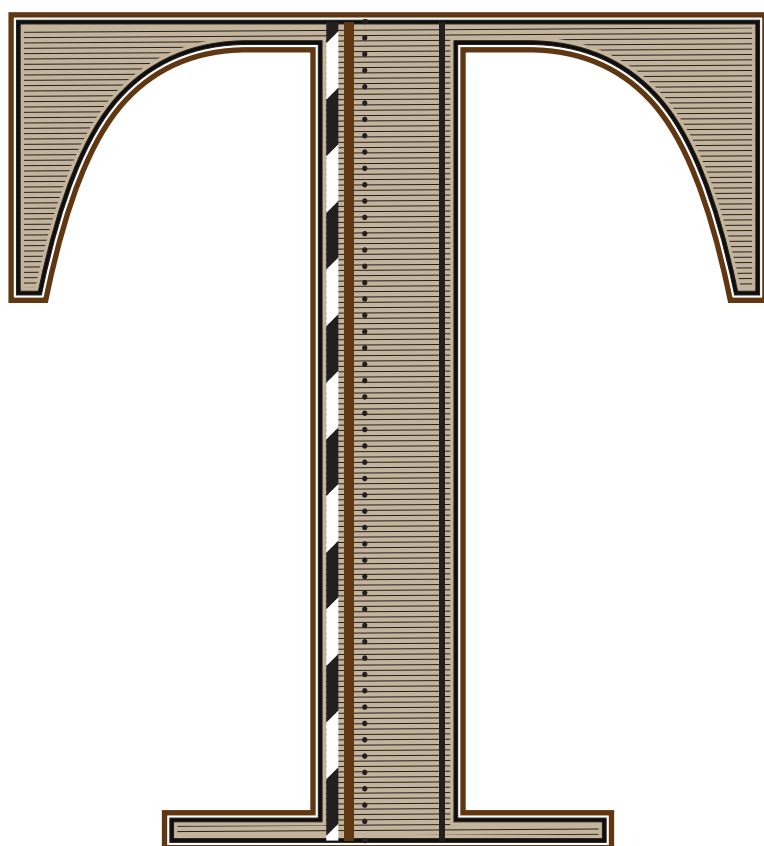
The pattern is out of proportion to the letterform and needs to be scaled down. We can do that easily.

Select the filled rectangle, go to Object>Transform>Scale.

To scale the pattern only, select Transform Patterns only... but you might want to scale the Object as well.. you get the idea and this is where you do it.



You can also Shear the pattern to create the Maypole look: Select your rectangles then go to Object>Transform>Shear. I've sheared mine at 45°. But now the whole thing is skewed. Select the shapes then go to Object>Transform>Rotate, and rotate by -45°.



Here I've created a series of fine lines to cover a brown-filled T. For info, the lines have a 0.25pt stroke.

I used Transform Each to create copies 2pt vertically apart.

I'm going to create a clipping mask using the inner T (created from the offset path action earlier) and the stroke lines as its fill.

First select the inner T and copy it - we're going to paste it back in place when we've clipped it. This is because the action of clipping it removes the T from the composition.

Select the lines then go to Object>Compound Path>Make.

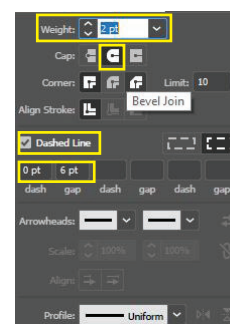
Select the T then go to Object>Arrange>Bring to Front, Shift-Click on the block of lines then go to Object>Clipping Mask>Make.

Paste the outline of the T back in place: Edit>Paste in Place or Shift+Ctrl+ V.

Want a dotted line?

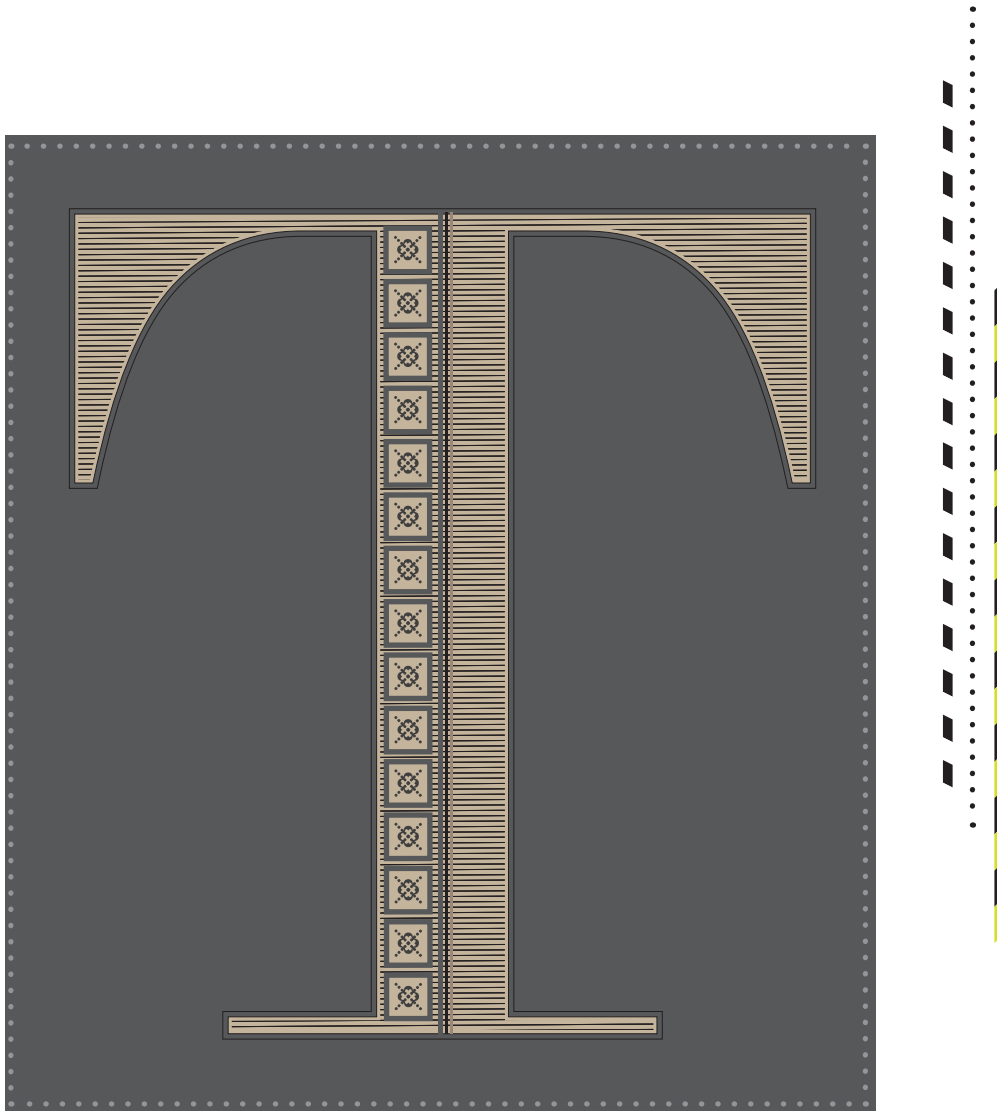
Use the Line Tool to draw a line then go to Properties>Stroke.

Simply fill the letterform with objects and elements as you wish.



How did I make a series of copies of the sheared pairs to create this Maypole?

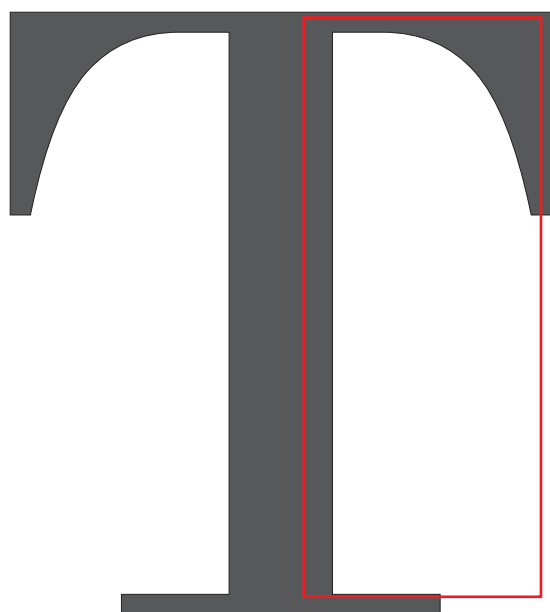
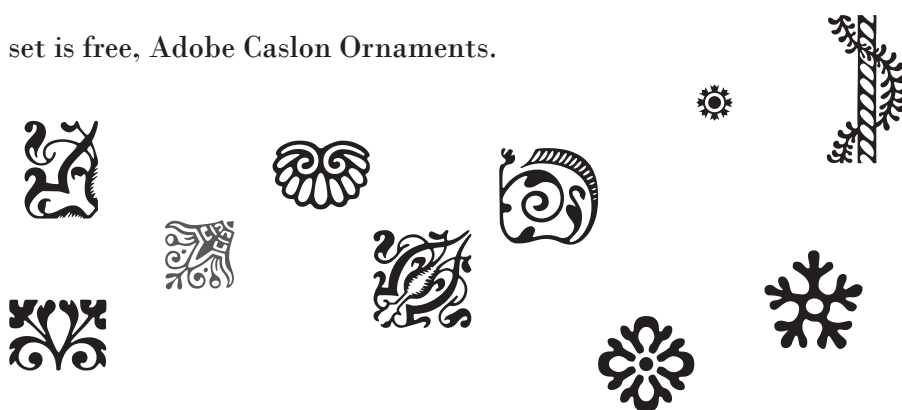
Zoom in, draw a rectangle that just touches the top of the uppermost point and the lower point of the bottom rectangle. Check the height of the rectangle - you'll see it under Properties>Transform>H (for height).





Play with dingbat fonts - use the Select Tool (V) then go to Type>Create Outlines and the Object>Ungroup and use them as fillers...

This set is free, Adobe Caslon Ornaments.



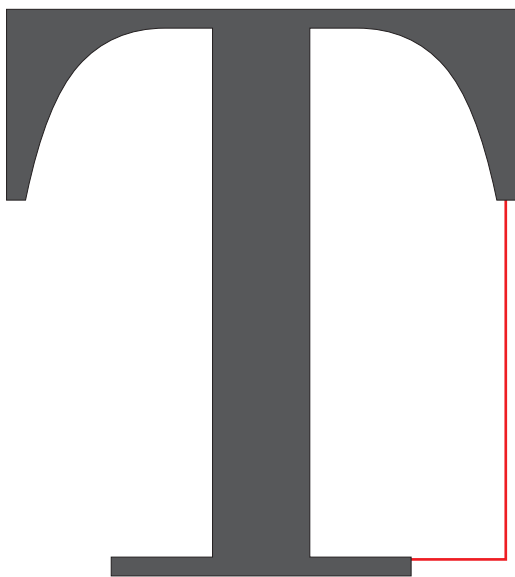
Finally, how about a shaped Text box? Take a copy of your letterform and paste it.

Create a rectangle and place it over the T over the area you want to create a shaped text box from then send the rectangle to the back (Object>Arrange>Send to Back).



Finally, how about a shaped Text box? Take a copy of your letterform and paste it.

Create a rectangle and place it over the T over the area you want to create a shaped text box from then send the rectangle to the back (Object>Arrange>Send to Back).



Select both objects then go to Pathfinder and select Minus Front. It looks a bit odd but fill it with text and it'll be fine.

