

# Intertwining with Live Paint Using Adobe Illustrator





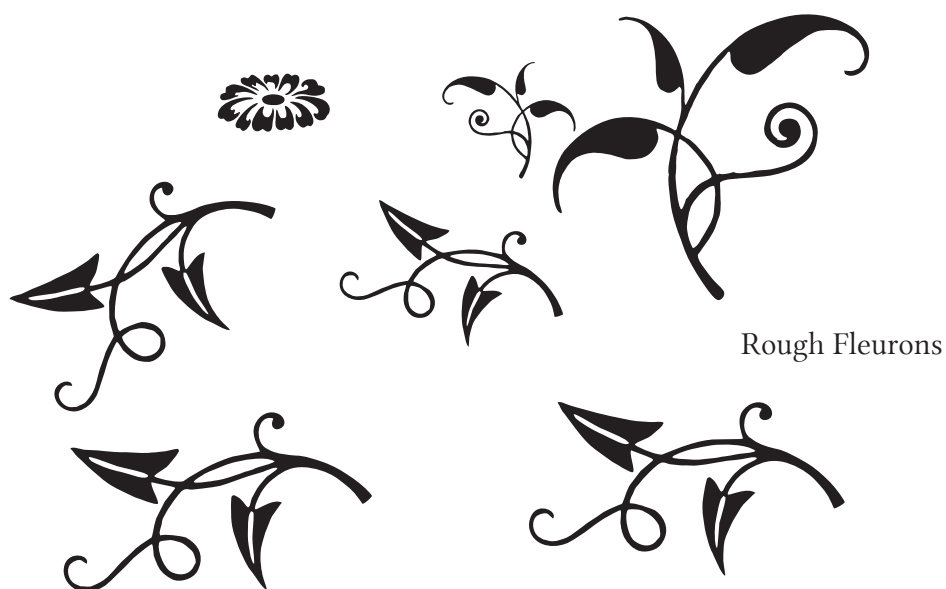
Let's start with a letter. This H is 'Linux Libertine G Display Regular' blown up to 387 pts high. Just incidental information. You can use any font, any height / width.

To make the letterform editable we need to turn it into an outline.

Select the letter (V), go to Type>Create Outlines (Shift+Ctrl+O). If you had a line of text you might also want to ungroup them as well, (Ctrl+Shift+G).

We need something to intertwine around the shape. I've typed the alphabet out in a dingbat font called Rough Fleurons (Da Font - free for non-commercial use). It looks like there are lots of intertwining possibilities with this set of characters.

Use the the Selection Tool (V) to select them, go to Type>Create Outlines and ungroup them (Ctrl+Shift+G). Each character is now a shape.





I've arranged a few of the characters from the Rough Fleurons set, reflected some of them (Object>Transform>Reflect>Vertical), made some smaller by dragging (holding down the Shift key to maintain their aspect ratio) to create a few intertwining places.

Here comes the awesome magic of Live Paint!

Get the colour paelette you want to work with.

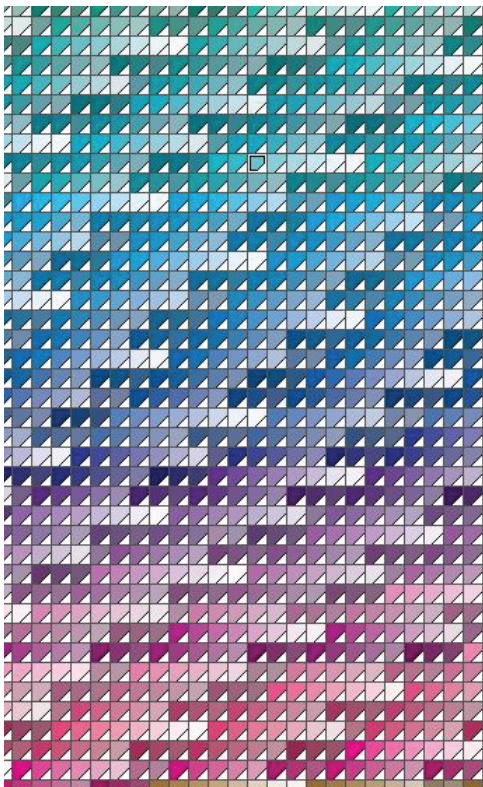
Select everything in th composition with the Selection Tool (V).

Go to Object>Live Paint>Make ( Alt+Ctrl+X)

Select the Live Bucket Tool (K).

Alt-Click on a colour then click on a segment of the composition to fill it.





Live Paint is really powerful and makes very quick work of intertwining.



